



SÜLEYMAN DEMİREL ÜNİVERSİTESİ
YENİLİKÇİ TEKNOLOJİLER ARAŞTIRMA ve UYGULAMA MERKEZİ
TEMEL VE UYGULAMALI BİLİMLER
GC MS BİRİMİ



ANALİZİ İSTEYEN: NU-K A
İTHALAT İHRACAT PAZ.SAN. TİC .LTD ŞTİ
ALANYA / ANTALYA
13.10.2020

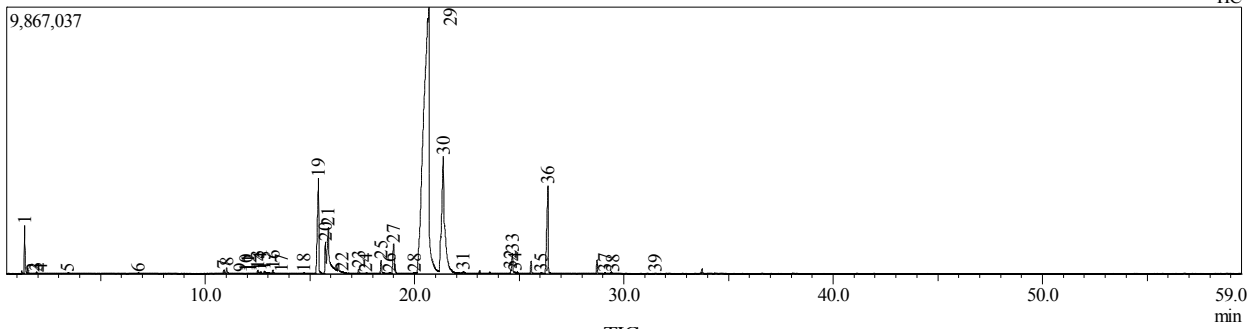
NUMUNE ADI: NUKA GÜLSUYU ŞARJ NO 07202200

ANALİZ : SPME İLE AROMA PROFİLİ

ANALİZ YETKİLİSİ : Dr. Öğr. Gör. MUSTAFA YILMAZER

BELGE KONTROL TEL S.D.Ü : 0 246 211 17 53
BELGE DİJİTAL KAYIT ALTINDADIR

Chromatogram C:\GCMSsolution\Data\Aroma-5MS\2020\NUKA\NUKA GÜLSUYU.qgd



Peak#	R.Time	Name	Area	Area%
1	1.368	Ethyl alcohol	4078692	1.39
2	1.775	2,3-Butanedione	47227	0.02
3	1.925	Ethyl acetate	100847	0.03
4	2.144	Acetic acid	17013	0.01
5	3.410	3-Penten-2-one, (E)-	27035	0.01
6	6.790	n-Hexanol	67632	0.02
7	10.882	Benzyl methyl ether	386451	0.13
8	11.025	.beta.-Myrcene	585050	0.20
9	11.669	cis-3-Hexenyl acetate	32142	0.01
10	11.959	1-Hexyl acetate	19355	0.01
11	12.035	.ALPHA. TERPINENE	59480	0.02
12	12.141	p-Methylanisole	41427	0.01
13	12.499	Limonene	399833	0.14
14	12.642	EUCALYPTOL (1,8-CINEOLE)	162032	0.06
15	12.824	cis-Ocimene	194209	0.07
16	13.225	.BETA. OCIMENE Y	303466	0.10
17	13.648	.gamma.-Terpinene	38429	0.01
18	14.702	.ALPHA.-TERPINOLENE	86207	0.03

Peak#	R.Time	Name	Area	Area%
19	15.411	Linalool	16115015	5.50
20	15.743	ROSE OXIDE B	3544353	1.21
21	15.883	Phenethyl alcohol	13927195	4.75
22	16.550	linalyl formate	151441	0.05
23	17.325	NEROLOXIDE	390170	0.13
24	17.686	Benzyl acetate	49422	0.02
25	18.404	4-Terpineol	1584364	0.54
26	18.793	Methyl salicylate	85478	0.03
27	18.996	.BETA. FENCHYL ALCOHOL	5364998	1.83
28	19.990	Farnesol	266626	0.09
29	20.683	BETA CITRONELLOL	182292473	62.20
30	21.375	Nerol	43771525	14.94
31	22.328	Benzene, 1-methoxy-4-(1-propenyl)-	131270	0.04
32	24.595	Citronellyl acetate	313342	0.11
33	24.680	Eugenol	2642237	0.90
34	24.795	Geranic acid	122168	0.04
35	26.047	Phenethyl isobutyrate	98240	0.03
36	26.373	Methyleugenol	15383218	5.25
37	29.084	Butyrate <2-methyl-, phenylethyl->	104496	0.04
38	29.480	BENZYL TIGLATE	54938	0.02
39	31.486	TRANS(.BETA.)-CARYOPHYLLENE	25352	0.01
			293064848	100.00